



AirMEDIA-Pro

Advanced High Definition Indoor LED Display

Super Slim Fully Enclosed Panel Design
Unique Long Format Horizontal Panel for Quicker Installation



Super Lightweight

- The AirMEDIA-Pro panel weighs in at a mere 7.6 kg. or 30.4 kg/m² making it light and easy for all fixed installation applications.

Front Serviceable

- To compliment the light and slim panel design, the AirMEDIA-S is front serviceable, making it the ideal choice for applications where installation space is at a premium.

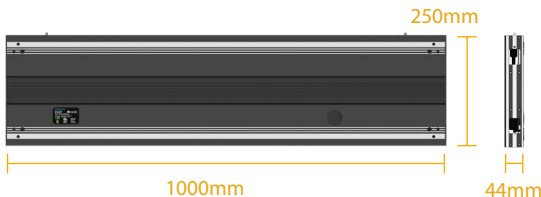


High Definition Indoor

- The AirMEDIA-Pro boasts the same picture qualities synonymous with all CreateLED displays, high contrast ratio, rich grey scale and high colour fidelity are thus standard.

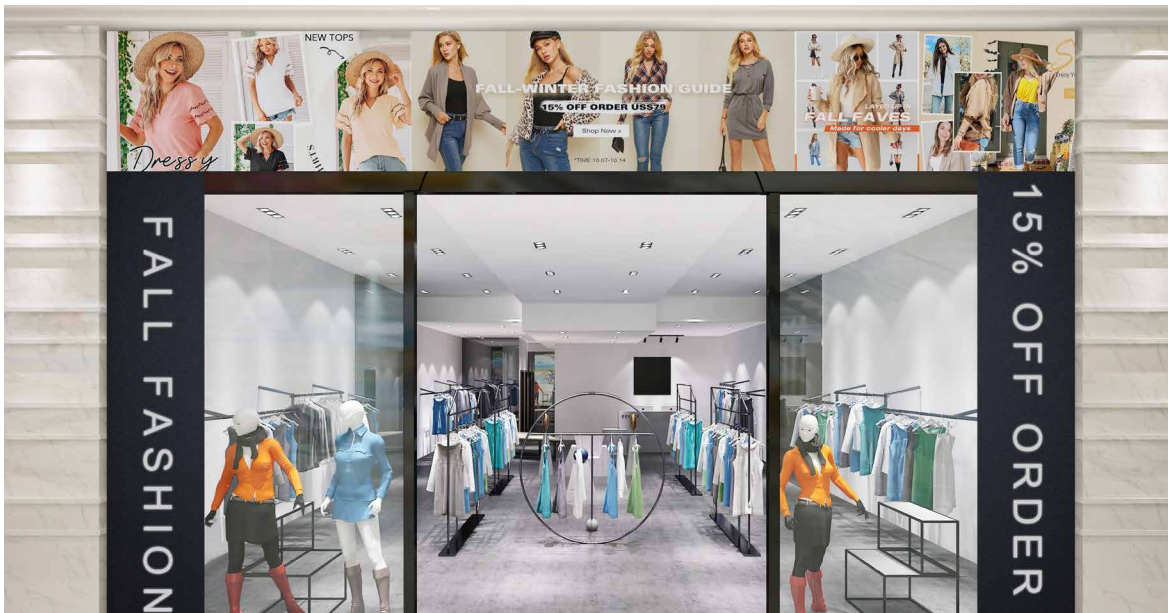
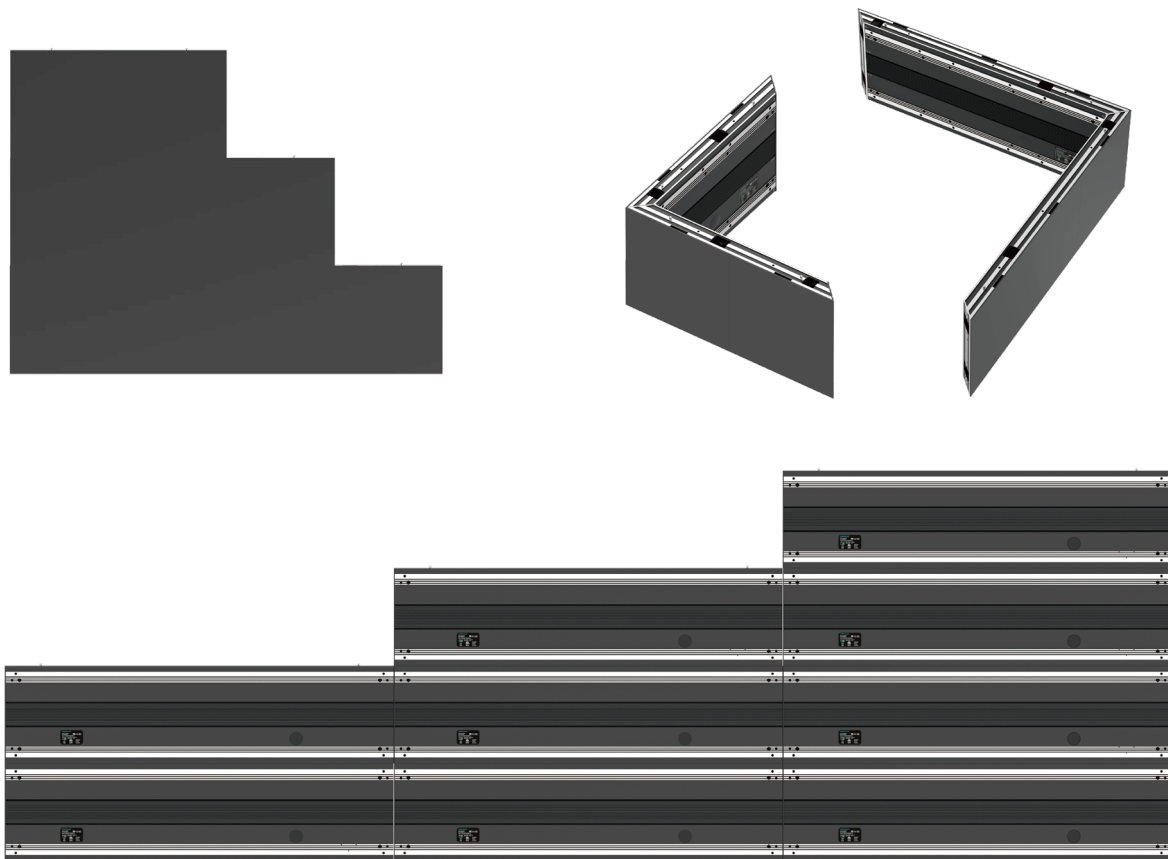
Super Slim

- The AirMEDIA-Pro has a slim panel depth of just 44 mm.



Unique Panel Dimension & Multiple Configuration Options

- The AirMEDIA-Pro is based on CreateLED's classic AirMAG range and is available in 3 different length options.
- The aluminum profile cabinet is fully enclosed and uses CNC precision to ensure a mechanically seamless display, making it neat and tidy from all angles.
- The versatile design allows for multiple configurations to meet various needs.
- Whether for large displays or creative installations, the AirMEDIA-Pro ensures superior display quality and an exceptional visual experience, making it suitable for a variety of applications.



AirMEDIA-PRO / Specifications

AirMEDIA-Pro (Indoor)	AirMEDIA-Pro 1.5	AirMEDIA-Pro 2.5
Physical Pitch	1.5625mm	2.5mm
Pixel Configuration	SMD	SMD
Pixel Density	409,600pixel/m ² 102,400pixel/panel	160,456 pixels/m ² 40,000 pixels/panel
LED Module Dimensions (mm)	250 × 250	250 × 250
Panel Dimensions (W × H × D) (mm)	1000 × 250 × 44	1000 × 250 × 44
No. of Modules Per Panel (W × H)	4 × 1	4 × 1
Physical Resolution of Module (W × H)	160 × 160	100 × 100
Physical Resolution of Panel (W × H)	640 × 160	400 × 100
Weight Per Panel	7.7 kg/panel*	7.7 kg/panel*
Weight Per m ²	30.8 kg/m ²	30.8 kg/m ²
Servicing	Front	Front
IP Rating	IP30	IP30
Brightness (after Cal.)	600-800nits	1000nits
Refresh Rate	3840Hz	3840Hz
Horizontal Viewing Angle	160°	160°
Vertical Viewing Angle	140°	140°
Processing	14 bit	14 bit
Colours	281 trillion	281 trillion
Contrast Ratio	4,000 : 1	4000 : 1
Average Power Consumption (Before Cal.)	156-260 w/m ²	156-260 w/m ²
Max Power Consumption	520 w/m ²	520 w/m ²
Operating Temp/Humidity	-10 ~ 40 °C/ 10% ~ 80%	-10 ~ 40 °C/ 10% ~ 80%
Storage Temp/Humidity	-20 ~ 50 °C/ 10% ~ 90%	-20 ~ 50 °C/ 10% ~ 90%
Expected LED Lifetime (Max)	100,000 Hrs	100,000 Hrs
Certification	CE, EMC ClassA, ETL, RoHS *	CE, EMC ClassA, ETL, RoHS *

*Notes: The Specifications are for reference; actual values may vary.
Shenzhen CreateLED Electronics Co.,Ltd reserves the right to modify product design, specifications,
and parameters without further notice.

Application Fields

- Car show

➤ Concert

➤ Station

➤ Events
- House of Worship

➤ Showroom

➤ Corporate

➤ DOOH
- School

➤ Shopping mall

➤ Stadium